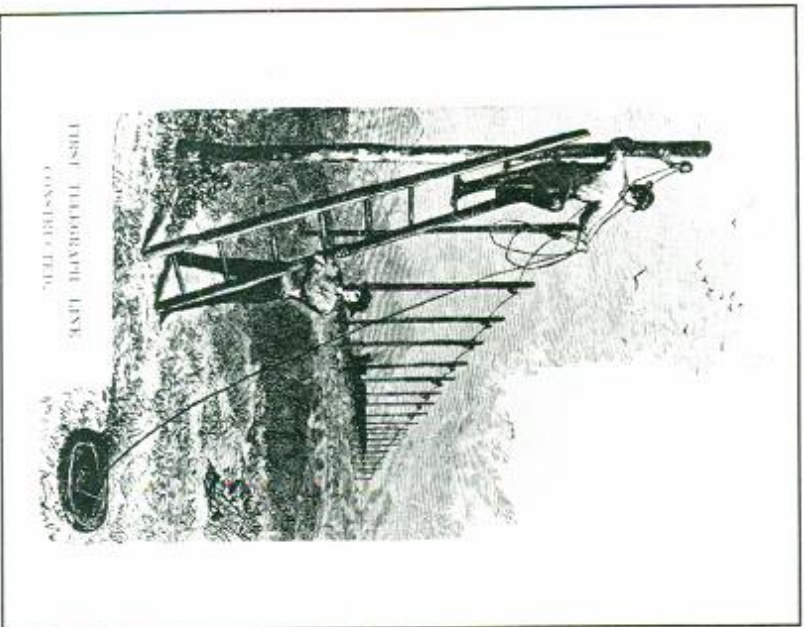
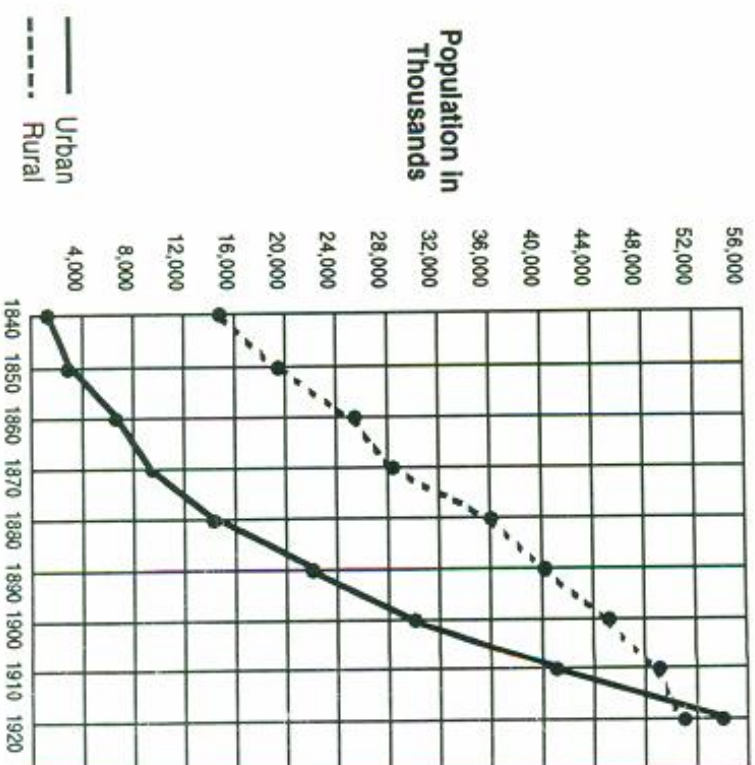
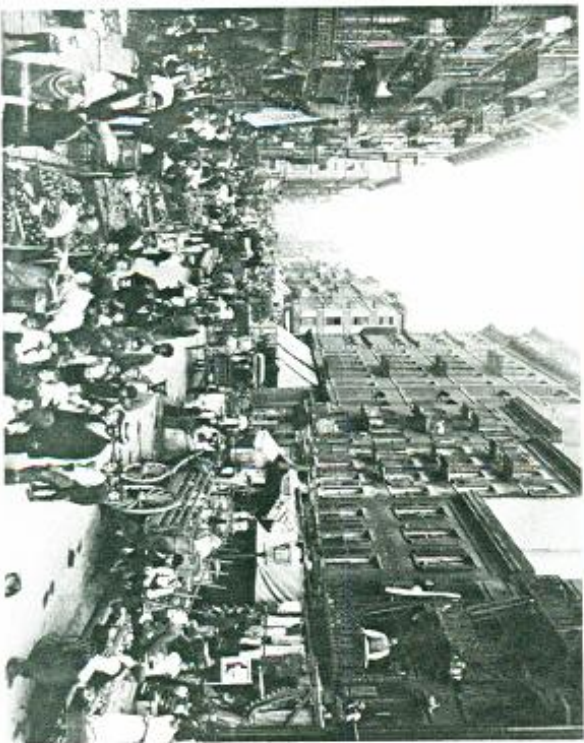


Miles of Telegraph Wire Installed, 1866-1911



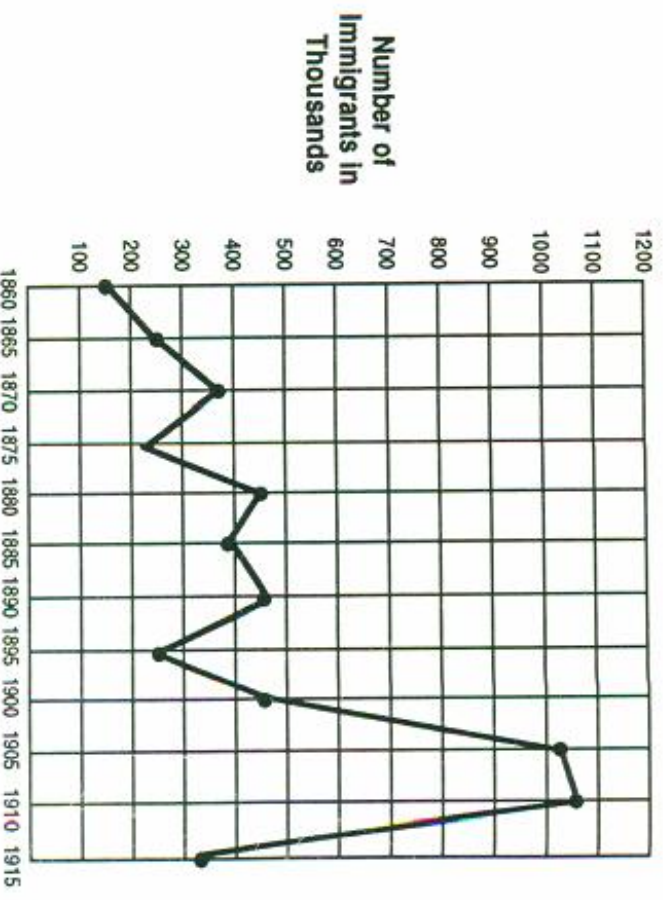
- A. Approximately how many miles of telegraph wire were installed in 1896?
- B. In which five-year period did the amount of telegraph wire installed increase the most?
- C. Notice the train at the base of the telegraph poles. How do you think the expansion of railroads and the expansion of telegraph services affected one another?




Population in Urban and Rural Territory, 1840-1920



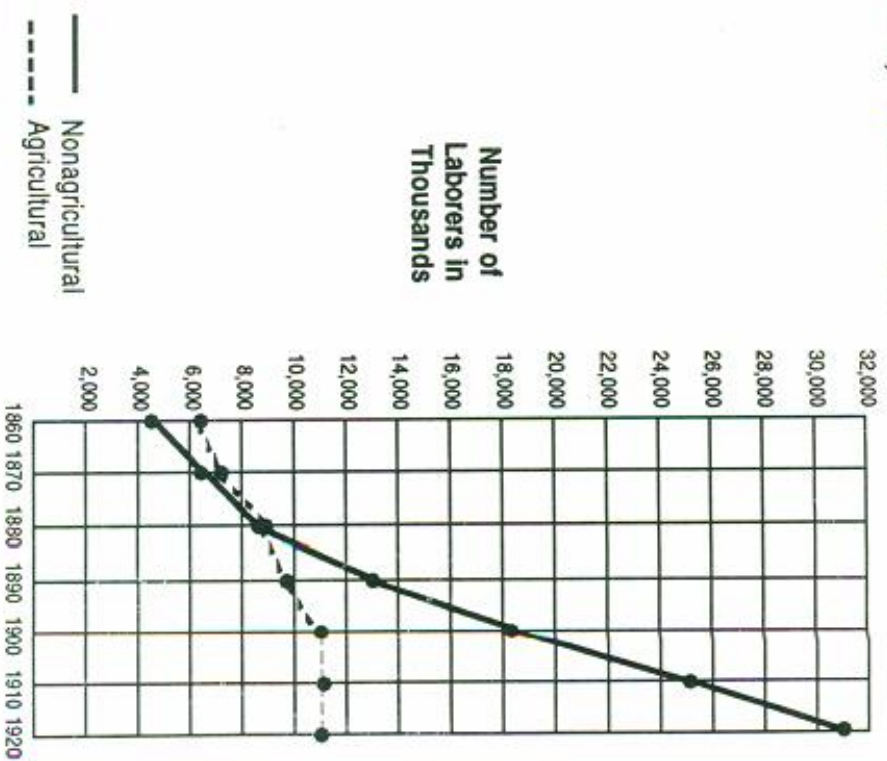
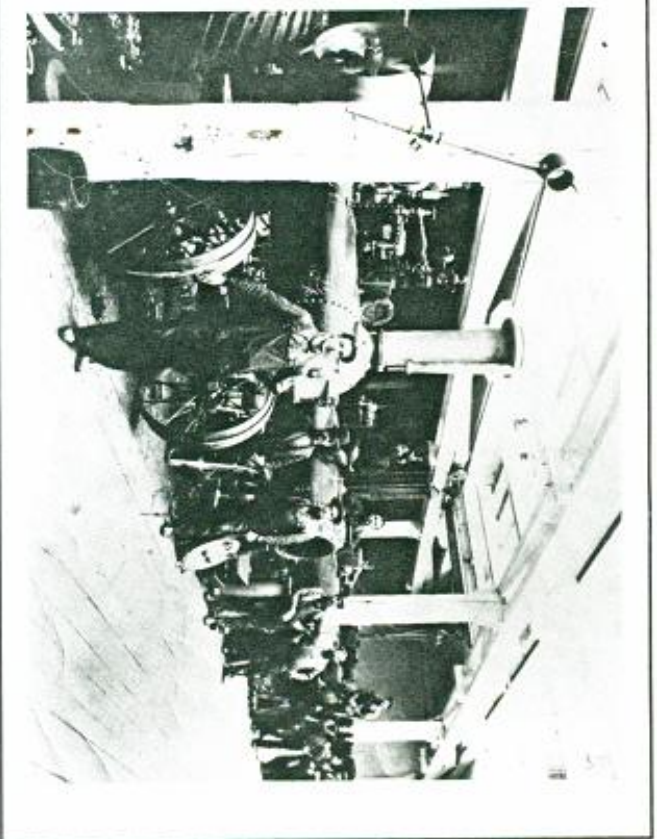
- A. In 1880, approximately what was the rural population? Urban population?
- B. Between the years 1840 and 1920 did the rural or the urban population increase more?
- C. What does this graph reveal about changing population patterns during these years?

Immigration to the United States, 1860-1915



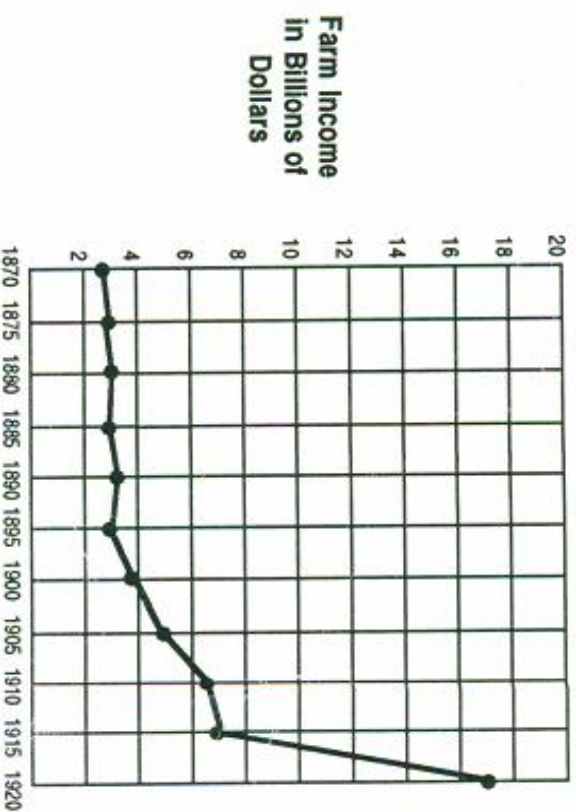
-  A. List the years in which more than 400,000 immigrants came to the United States.
-  B. In which five-year period did immigration increase the most? Decrease the most?
-  C. What does this graph reveal about immigration patterns during these years?

Total Number of Workers, 1860-1920



- A. In what year were the numbers of workers in agricultural and nonagricultural jobs the closest?
- B. List the years in which the number of laborers in agricultural jobs was greater than the number in nonagricultural jobs.
- C. Which type of workers are pictured in the photograph? Describe how the line graph reveals their importance to the U.S. economy.

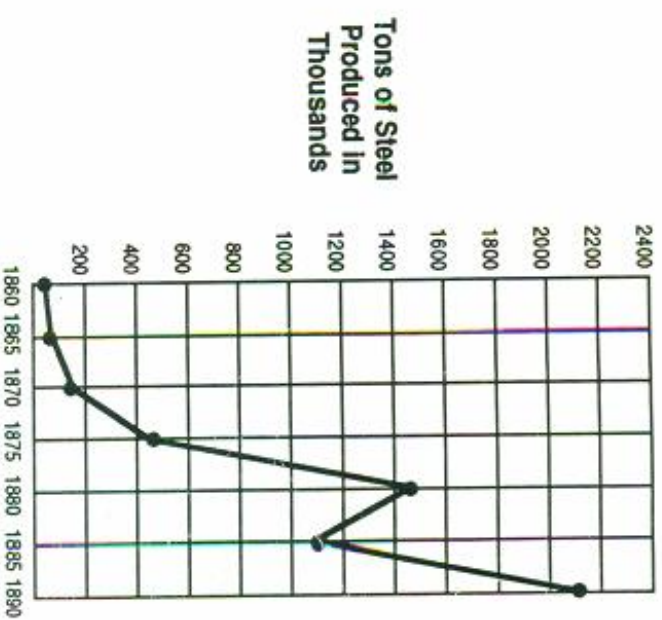
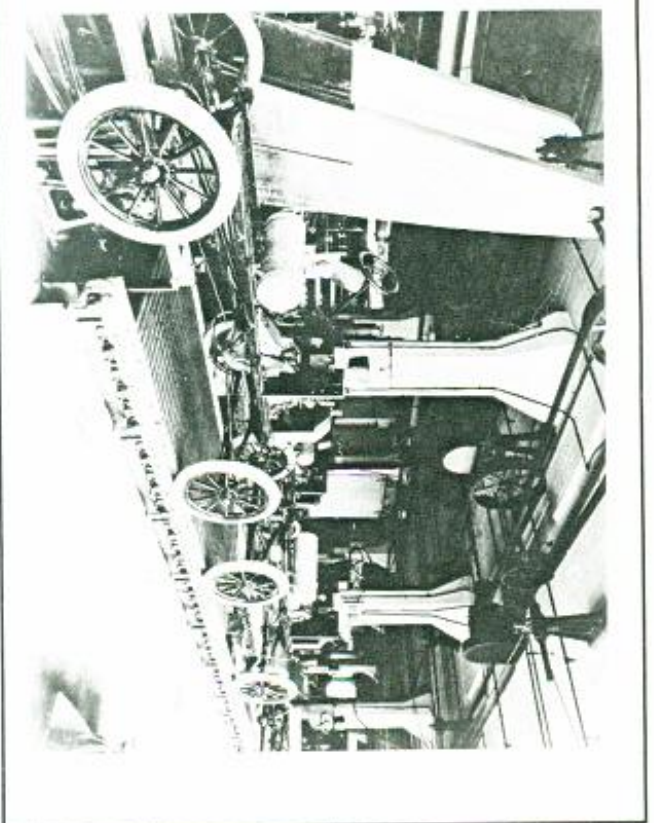
Farm Income, 1870-1920






- A. What is the total number of years represented on the horizontal axis?
- B. The indicator line shows two basic trends in farm income. In what period did farm income remain steady? In what period did farm income constantly increase?

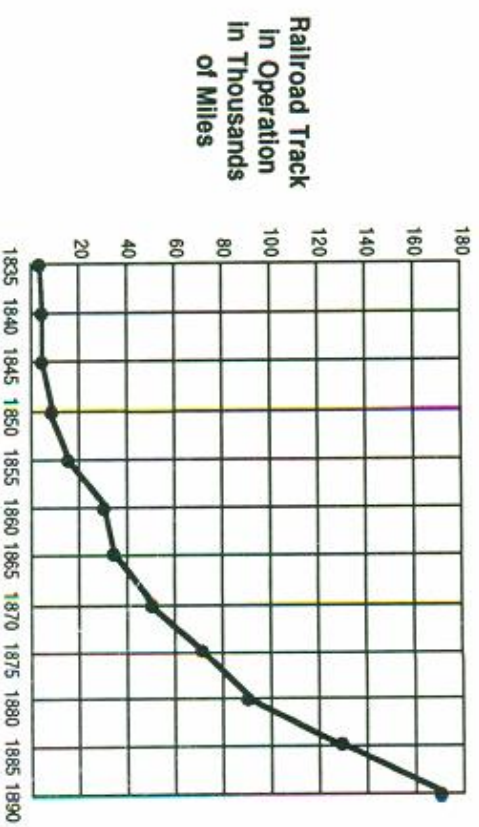
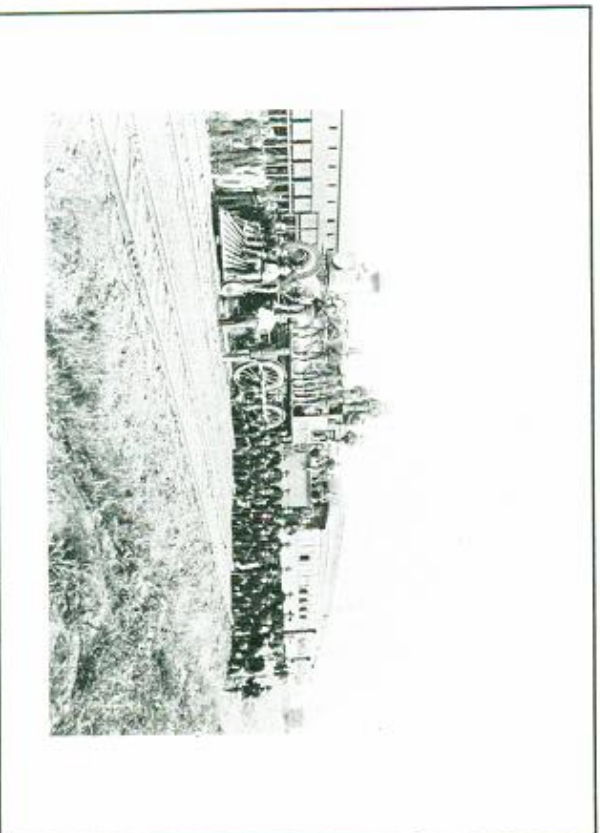
- C. Look carefully at the picture above. In what ways do you think new technology affected farm income after 1895?




Total Raw Steel Produced, 1860-1890



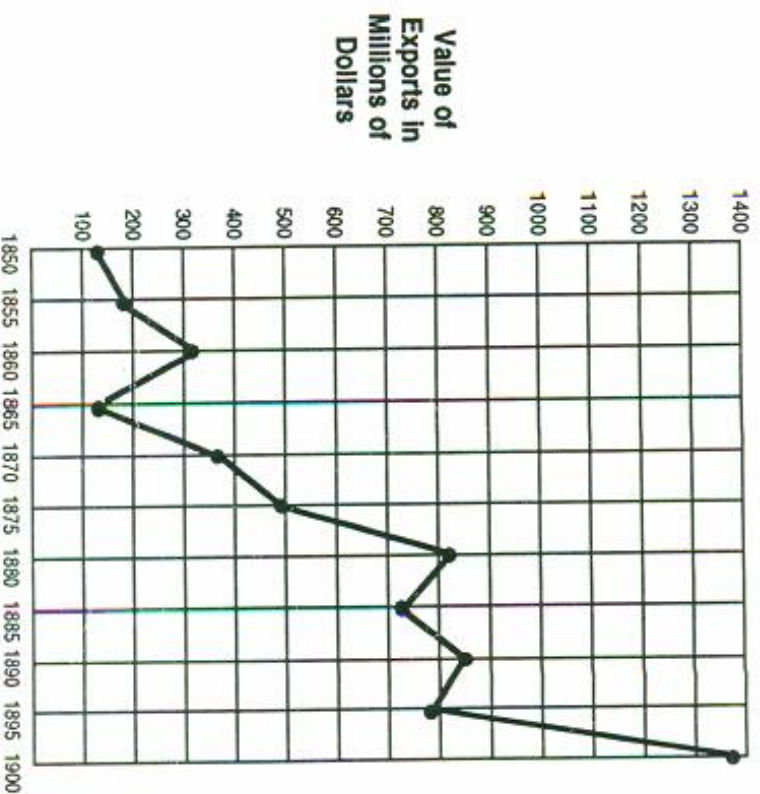
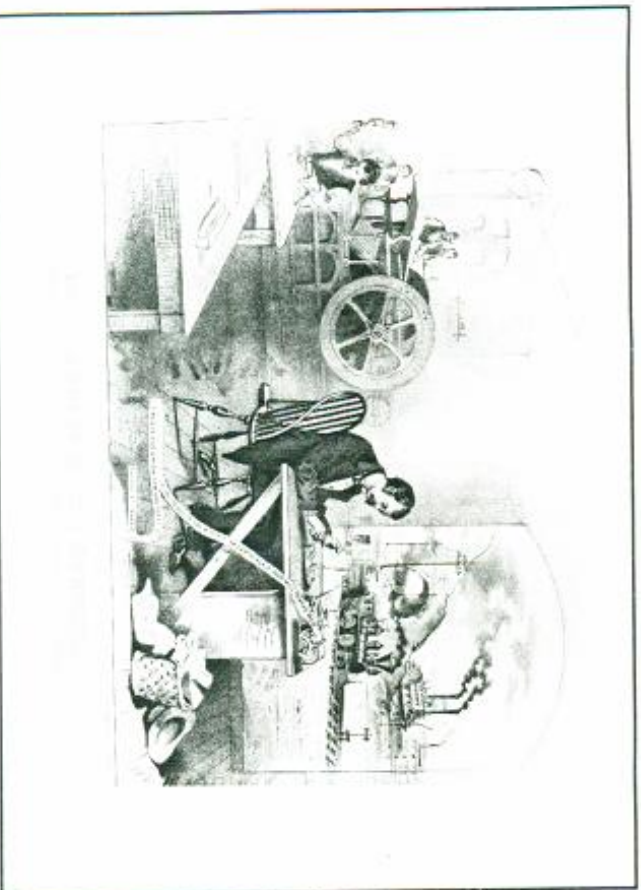
-  A. In what years were one million or more tons of steel produced?
-  B. Approximately how many more tons of steel were produced in 1885 than in 1865?
-  C. Look carefully at both the photograph and the line graph. How did steel production contribute to the growth of other key industries in this time period?

Miles of Railroad Track in Operation, 1835-1890



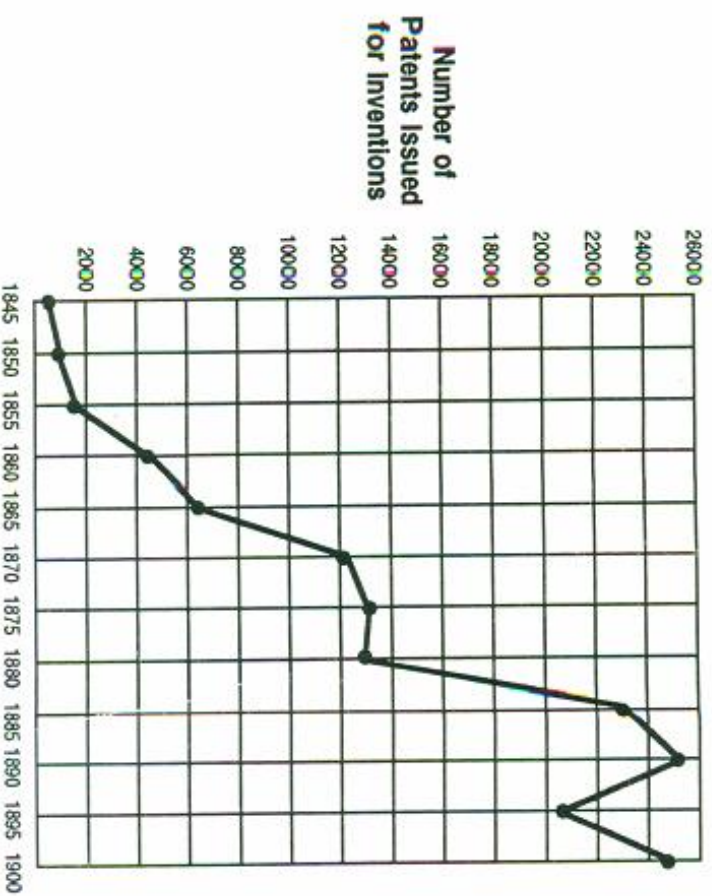
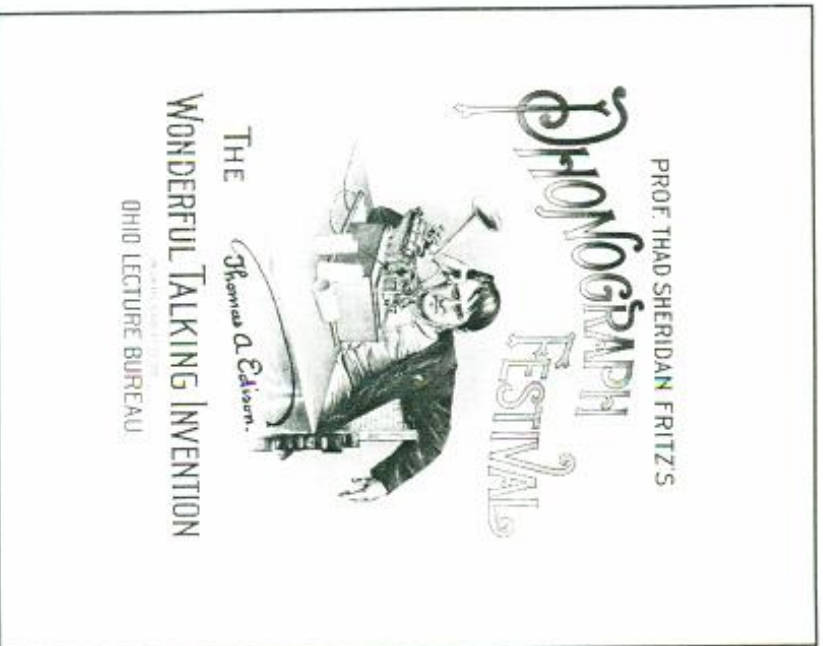
-  A. What does the horizontal axis show? The vertical axis?
-  B. Look at the indicator line and describe the trend in miles of railroad track operated.
-  C. How do you think the expansion of railroads contributed to the rise of industrialism in the United States?

Total Value of Exports from the United States, 1850-1900



- What does the horizontal axis show? The vertical axis?
- in how many periods did the value of exports decline? Name those periods.
- What was the overall trend in the value of exports between 1850 and 1900? What does the picture suggest were some of the factors that contributed to this trend?

Patents Issued for Inventions, 1845-1900



- A. Approximately how many patents were issued in 1845? In 1880? In 1900?
- B. What was the overall trend in patents issued between 1845 and 1900?
- C. Why do you think the trend in the number of patents issued was so important to the rise of industrialism?